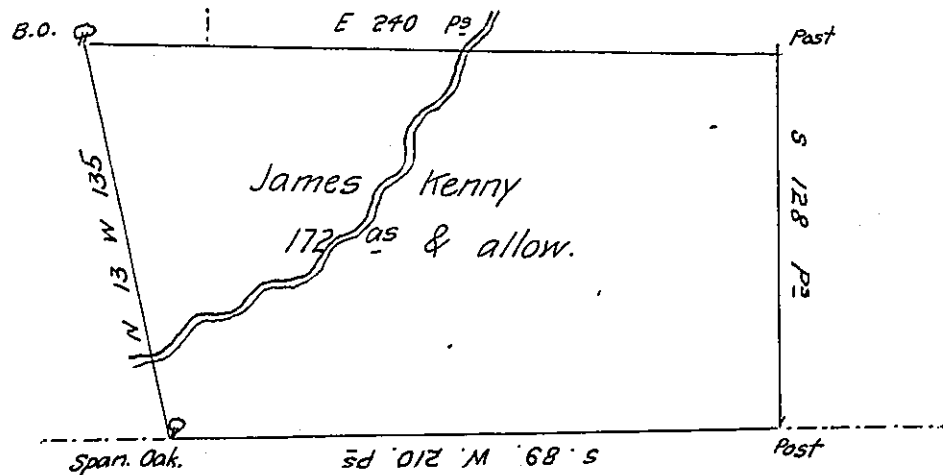


Land of Thomas Wilson

Land of Richard Downing

Land of John Downing



Land of Thomas Downing

Pursuant to a Warrant dated the <sup>25<sup>th</sup></sup> ~~first~~ day of ~~August~~ July  
 Anno Domini 1751 Surveyed to James Kenny the 9<sup>th</sup> day of December  
 1751 the above described Tract of land Situate on a small Branch of  
 Brandiwine—in East Caln Township in Chester County &c.

De<sup>n</sup> Lightfoot.—

IN TESTIMONY that the above is a copy of the original remaining on file in  
 the Department of Internal Affairs of Pennsylvania, made  
 conformably to an Act of Assembly approved the 16th day of  
 February, 1833, I have hereunto set my Hand and caused  
 the Seal of said Department to be affixed at Harrisburg,  
 this second day of August 1905

*Isaac P. Downey*  
 Secretary of Internal Affairs